
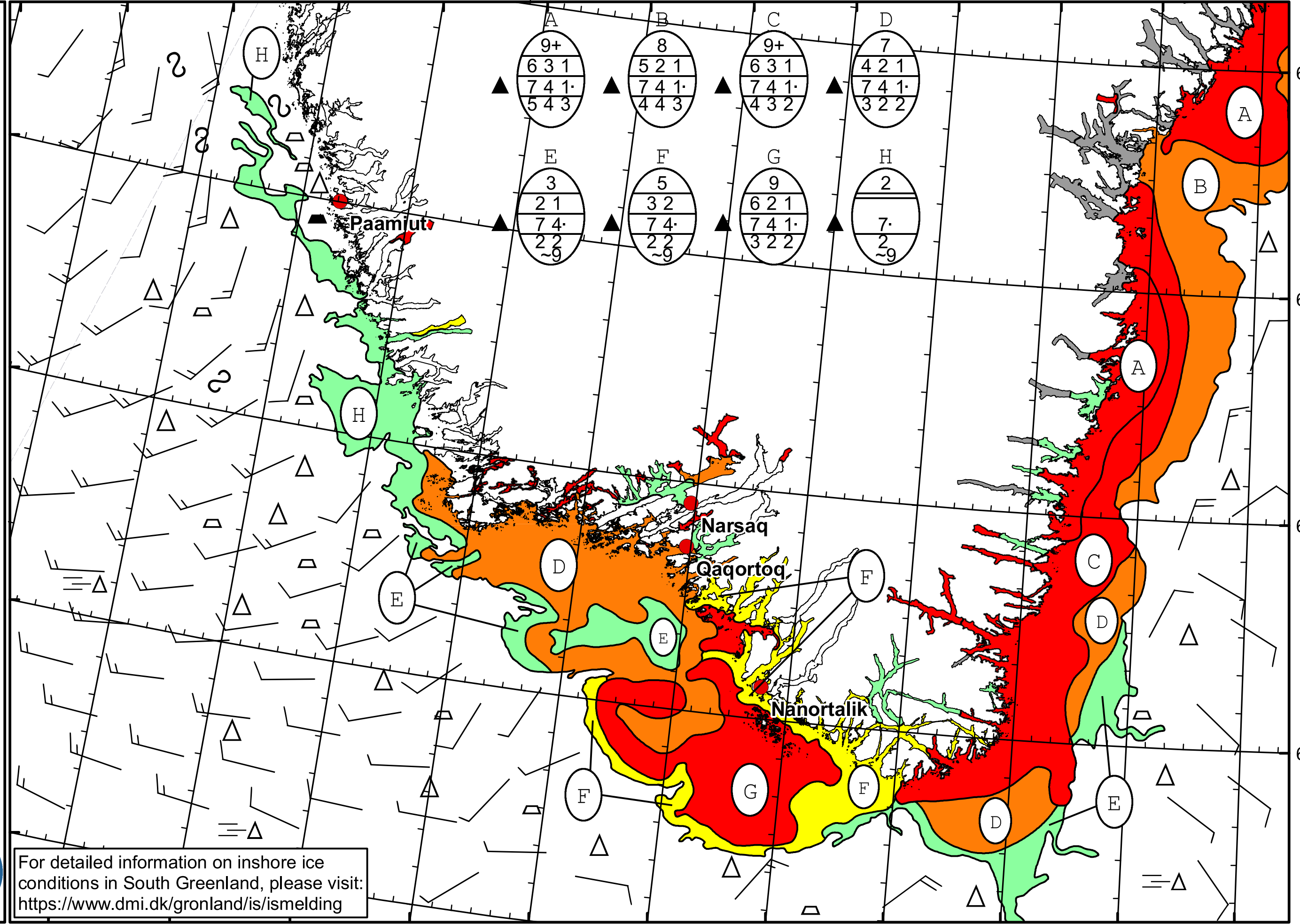


53°W 52°W 51°W 50°W 49°W 48°W 47°W 46°W 45°W 44°W 43°W 42°W 41°W


  
 DMI
   
 Ice Service
   
 Danish Meteorological Institute
   
 Cape Farewell Ice Chart
   
 Valid: 18 April 2024, 20:55 UTC
   
 Next Chart: 21 April 2024



For detailed information on inshore ice conditions in South Greenland, please visit:  
<https://www.dmi.dk/gronland/is/ismelding>

51°W 50°W 49°W 48°W 47°W 46°W 45°W 44°W 43°W 42°W 41°W