



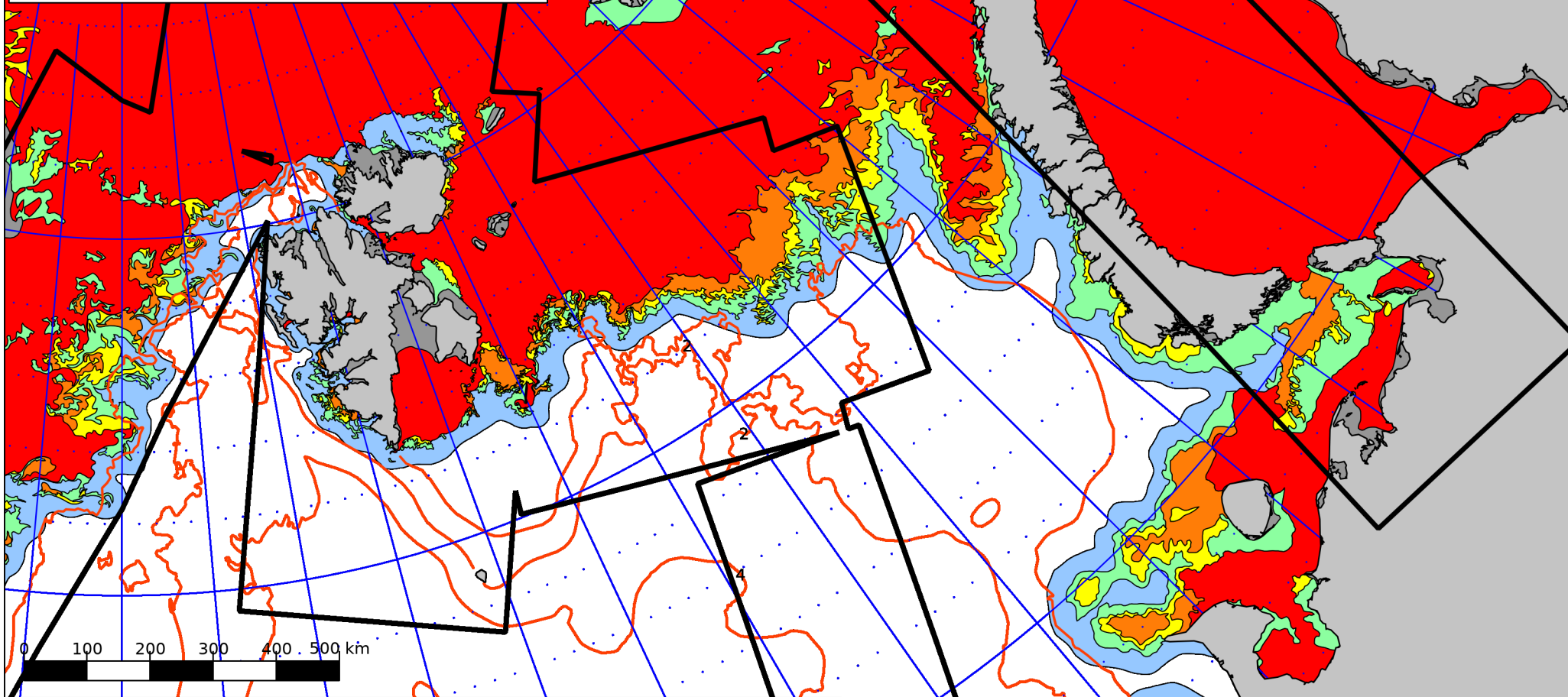
Norwegian
Meteorological
Institute

Ice Service

Forecasting Division for Northern Norway
N-9293 Tromsø, Norway
Tel: +47 90 47 20 48 E-mail: istjenesten@met.no Twitter: @istjenesten

3rd May 2024

Valid 15:00 UTC



Ice Categories

| | | | | | |
|------------|----------------------|-----------|-----------------|-----------|---------------------|
| 10/10ths | Fast Ice | 7-9/10ths | Close Drift Ice | 1-4/10ths | Very Open Drift Ice |
| 9-10/10ths | Very Close Drift Ice | 4-7/10ths | Open Drift Ice | 0-1/10ths | Open Water |

Projection: Polar Stereographic, True Scale at 90°N, WGS84 Scale: 9,157,425
 Map Corners:
 UL = 85°38'27.370"N, 22°30'30.866"W UR = 69°14'18.848"N, 78°55'47.338"E
 LR = 62°23'53.257"N, 47°3'49.930"E LL = 70°56'18.875"N, 4°58'48.187"W
 Coastline Data: GSHHS version 2.2.0 (<http://www.soest.hawaii.edu/wessel/gshhs/>)



— Sentinel-1
— Radarsat-2

○ Sea Surface Temperature