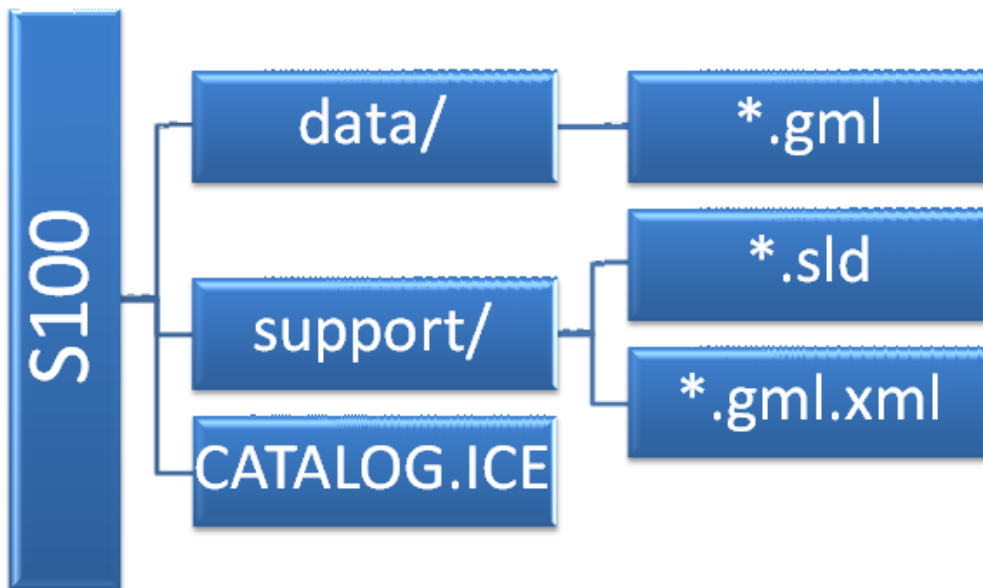


Baltic sea ice chart issued by the Bundesamt für Seeschifffahrt und Hydrographie (BSH). This chart is issued weekly in during the ice season in the Baltic.

IHO S-100 Ice Charts

This chart is a test data, that was producing using [IHO S-100 Standard](#). The dataset and support files are combined in a Exchange Set. The Exchange Set structure for ice data is following:

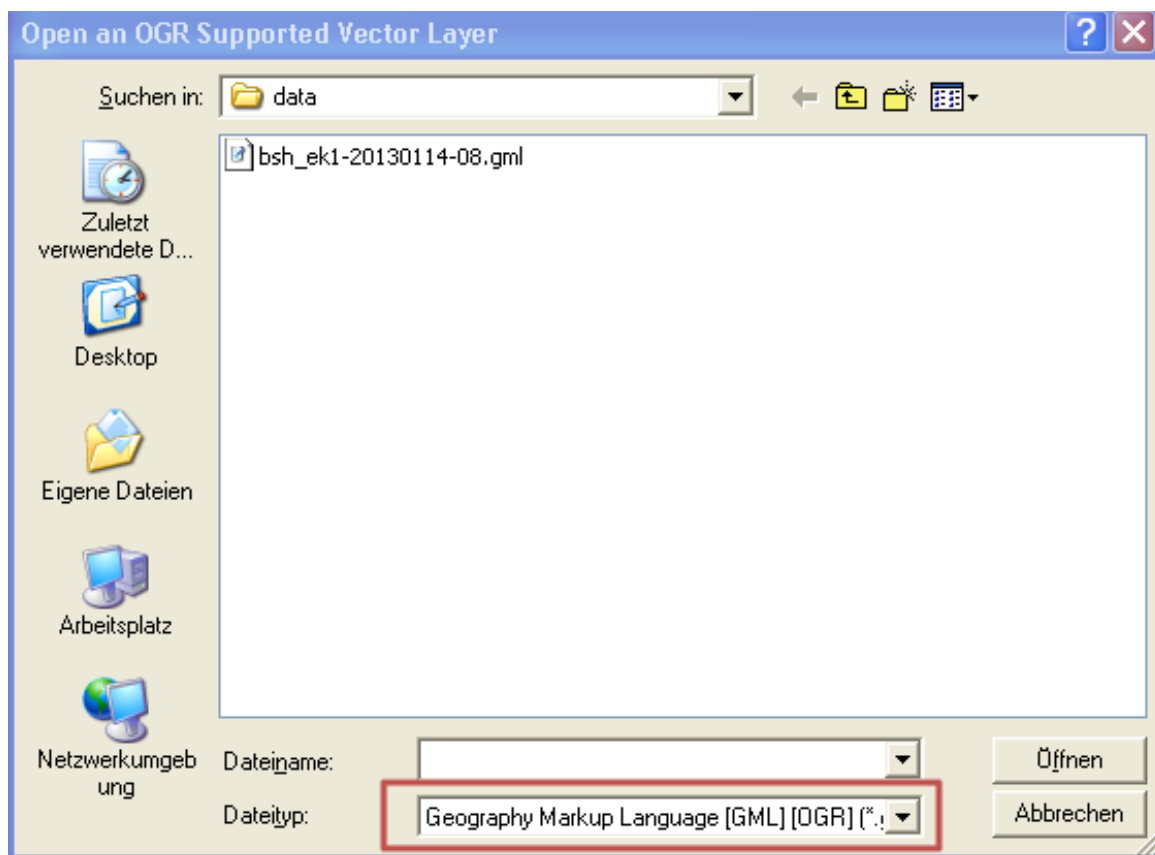


- **S100** S100 is a root directory of Exchange Set
 - **data/** is subdirectory of S100 containing dataset
 - ***.gml** is dataset file in GML 3.2.1 format
 - **support/** is subdirectory of S100 containing support files
 - ***.sld** is a file containing display rules (at the moment WMO Color Code for ice concentration), for encoding was used [Symbology Encoding V.1.1.0](#) from [OGC](#).
 - ***.gml.xml** contains the ISO 19139 Metadata
 - **CATALOG.ICE** Metadata file for whole Exchange Set (encoded in XML)

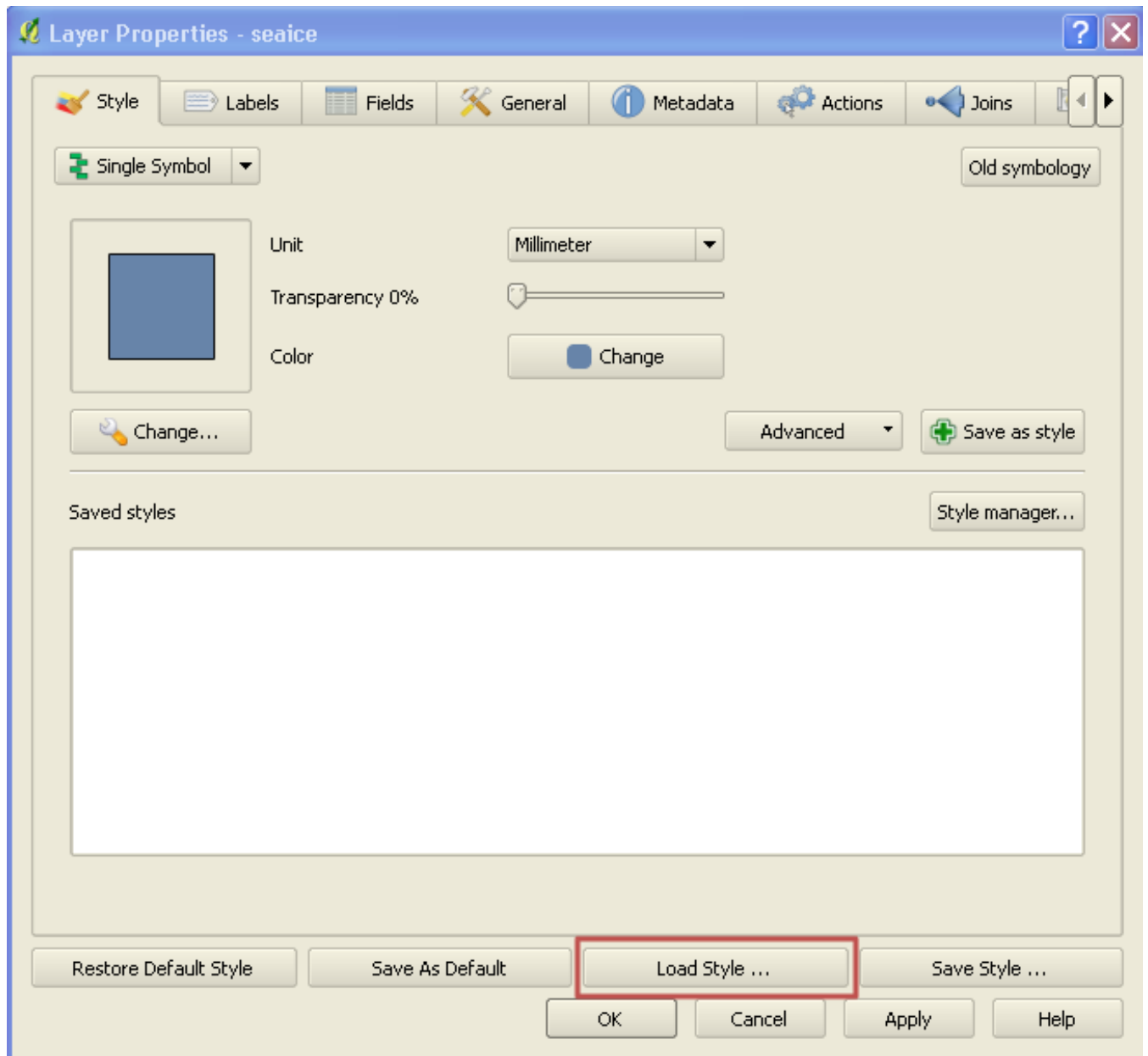
Display S-100 Ice Data

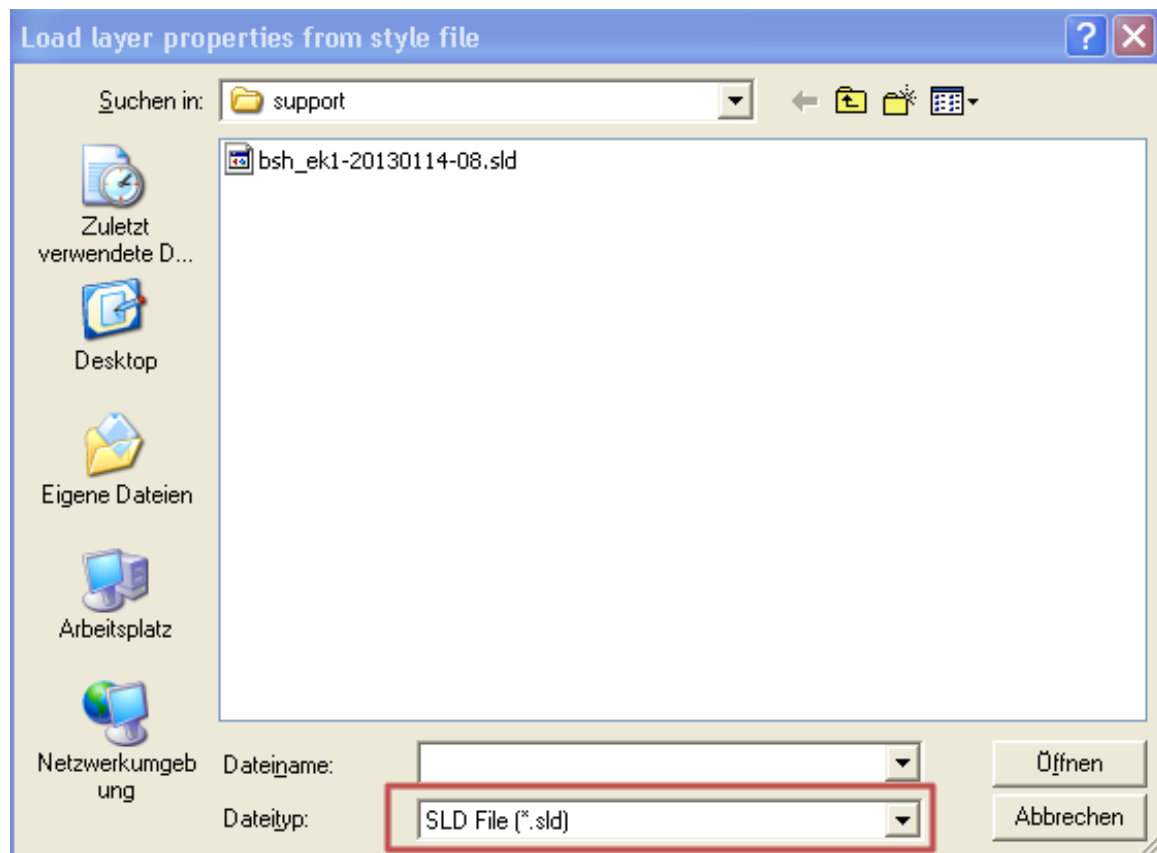
For displaying of S-100 ice data [QuantumGIS](#) can be used:

1. Install and start QuantumGIS
2. Layer -> Add Vector Layer ... -> Browse
3. Select as file type "Geography Markup Language [GML] ..."



4. Select *.gml file from Exchange Set ("data" - folder) -> Open
5. Select "sealice" - layer in the layer table -> Layer -> Properties ... -> Style
6. Load Style ...





Select *.sld file from support directory -> Open -> OK