



Norwegian  
Meteorological  
Institute

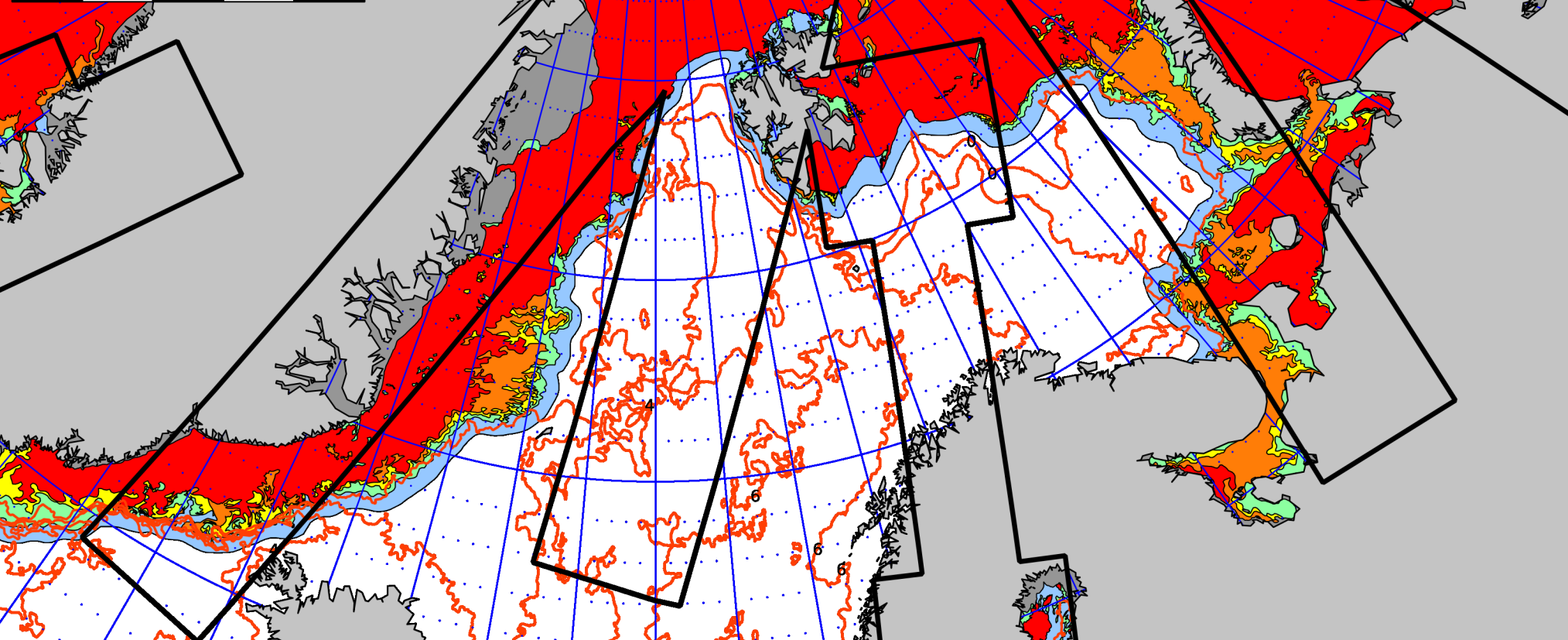
**Ice Service**

Forecasting Division for Northern Norway  
N-9293 Tromsø, Norway  
Tel: +47 90 47 20 48 E-mail: [istjenesten@met.no](mailto:istjenesten@met.no) Twitter: @istjenesten

**22nd April 2024**

Valid 15:00 UTC

0 200 400 600 800 1000 km



**Ice Categories**

10/10ths	Fast Ice	7-9/10ths	Close Drift Ice	1-4/10ths	Very Open Drift Ice
9-10/10ths	Very Close Drift Ice	4-7/10ths	Open Drift Ice	0-1/10ths	Open Water

Projection: Polar Stereographic, True Scale at 90°N, WGS84 Scale: 16,580,902  
 Map Corners:  
 UL = 73°10'50.572"N, 83°55'51.534"W UR = 66°46'32.424"N, 85°38'11.481"E  
 LR = 53°45'33.028"N, 38°47'58.682"E LL = 57°11'35.748"N, 29°59' 8.321"W  
 Coastline Data: GSHHS version 2.2.0 (<http://www.soest.hawaii.edu/wessel/gshhs/>)



— Sentinel-1  
— Radarsat-2

— Sea Surface Temperature